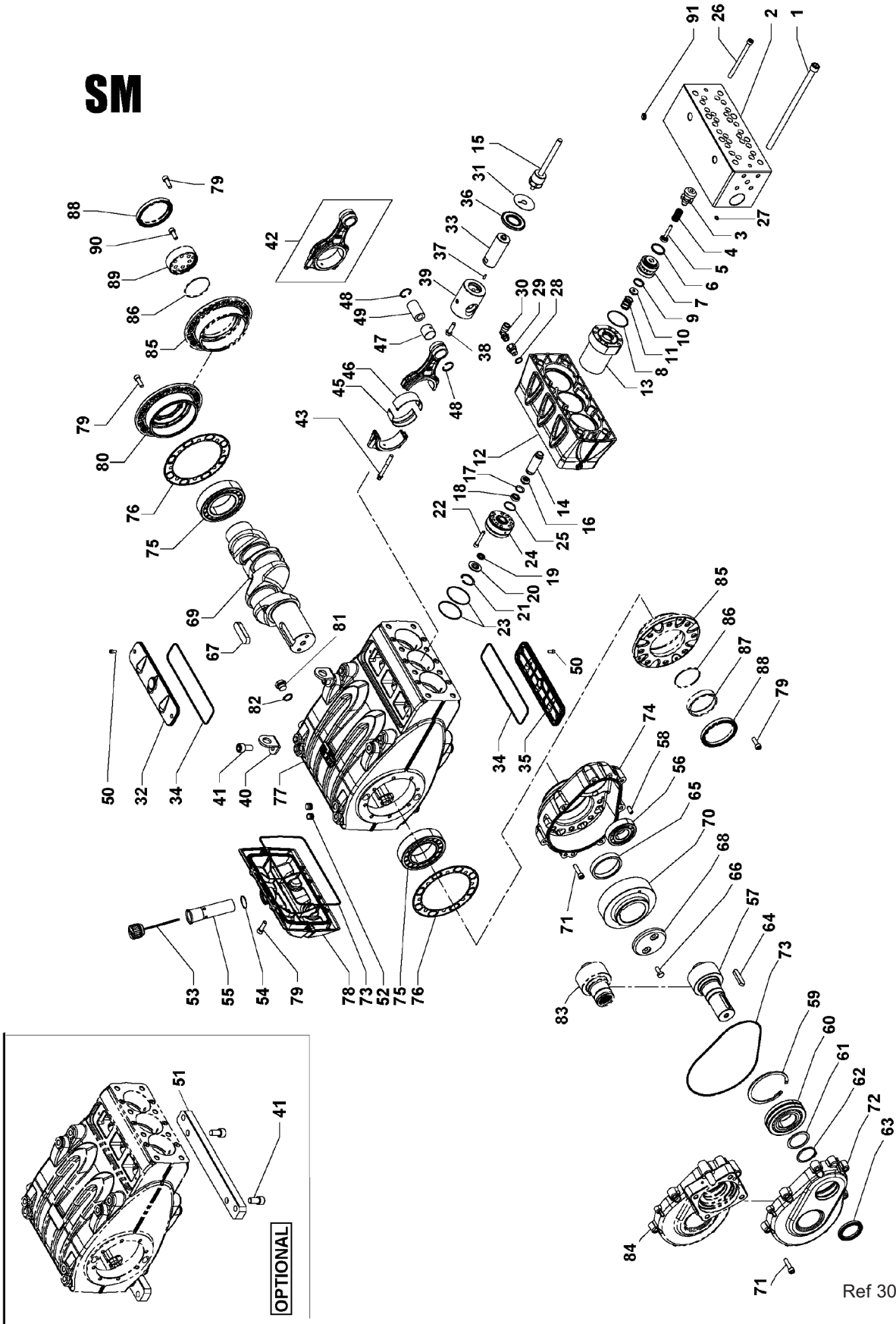


## 16. EXPLODED VIEW AND PARTS LIST

**SM**



Item	Part #	Description	QTY.
1	F99524200	SCREW, M16X320, UNI 5931	8
2	F73120656	MANIFOLD	1
3	F36208060	VALVE GUIDE	3
4	F94747500	SPRING, Ø 18X35, SS	3
5	F36208356	VALVE, Ø 14, 16, 18	3
6	F93198700	GASKET, Ø 36x31x3.8	3-6
7	F36210956	VALVE HOUSING, Ø 14, 16, 18	3
	F36208156	VALVE HOUSING, 20, 22, 24	3
8	F90309300	O-RING, Ø 60X2X2.62	3
9	F93197400	GASKET, Ø 26X31X3.8	3
10	F36211056	FLAT VALVE, Ø 14, 16, 18	3
	F36207856	FLAT VALVE, Ø 20, 22, 24	3
11	F94752500	SPRING, Ø23.2X30.8, SM14-16-18	3
	F94746000	SPRING, Ø32X40, SM20-22-24	3
12	F73217320	SPACER FOR LINER	1
13	F73060056	LINER, SM14-16-18	3
	F73060156	LINER, SM20-22-24	3
14	F73219882	PLUNGER BUSHING, Ø14	3
	F73219982	PLUNGER BUSHING, Ø16	3
	F73220082	PLUNGER BUSHING, Ø18	3
	F73220182	PLUNGER BUSHING, Ø20	3
	F73220282	PLUNGER BUSHING, Ø22	3
	F73220382	PLUNGER BUSHING, Ø24	3
15	F73041201	PLUNGER, COMPLETE, Ø14	3
	F73041301	PLUNGER, COMPLETE, Ø16	3
	F73041401	PLUNGER, COMPLETE, Ø18	3
	F73041501	PLUNGER, COMPLETE, Ø20	3
	F73041601	PLUNGER, COMPLETE, Ø22	3
	F73041701	PLUNGER, COMPLETE, Ø24	3
16	F90260650	ALT. SEAL RING, Ø14X26X11, HP	3
	F90263500	ALT. SEAL RING, Ø16X26X11, HP	3
	F90265200	ALT. SEAL RING, Ø18X25X10.6, HP	3
	F90271200	ALT. SEAL RING, Ø 20X36X17.9, HP	3
	F90273300	ALT. SEAL RING, Ø 22X36X17.9, HP	3
	F90274400	ALT. SEAL RING, Ø 24X36X17.9, HP	3
17	F73219268	ANTI-EXTRUSION RING, Ø 14	3
	F73219368	ANTI-EXTRUSION RING, Ø 16	3
	F73219468	ANTI-EXTRUSION RING, Ø 18	3
	F78212568	ANTI-EXTRUSION RING, Ø 20	3
	F78213668	ANTI-EXTRUSION RING, Ø 22	3
	F78213768	ANTI-EXTRUSION RING, Ø 24	3
18	F73219560	SEAL BUSHING, Ø 14	3
	F73219660	SEAL BUSHING, Ø 16	3
	F73219760	SEAL BUSHING, Ø 18	3
	F78213160	SEAL BUSHING, Ø 20	3
	F78213260	SEAL BUSHING, Ø 22	3
	F78213360	SEAL BUSHING, Ø 24	3
19	F90260400	ALT. SEAL RING, Ø14X26X11, LP	3
	F90262950	ALT. SEAL RING, Ø16X26X11, LP	3
	F90265150	ALT. SEAL RING, Ø18X25X10.6, LP	3
	F90268900	ALT. SEAL RING, Ø 20X36X17.9, LP	3
	F90271400	ALT. SEAL RING, Ø 22X36X17.9, LP	3
	F90273900	ALT. SEAL RING, Ø 24X36X17.9, LP	3
20	F73218656	SEAL RING, Ø 14	3
	F27218756	SEAL RING, Ø 16	3
	F73218856	SEAL RING, Ø 18	3
	F73218956	SEAL RING, Ø 20	3
	F73219056	SEAL RING, Ø 22	3
	F73219156	SEAL RING, Ø 24	3
21	F90073100	RING, SEEGER, Ø 40, UNI 7437	3
22	F99214600	SCREW M8X50 UNI 5931	30
23	F90391300	O-RING, Ø 67.95X2.62	6
24	F73218056	GASKET SUPPORT, Ø 14	3
	F73218156	GASKET SUPPORT, Ø 16	3
	F73218256	GASKET SUPPORT, Ø 18	3
	F73218356	GASKET SUPPORT, Ø 20	3
	F73218456	GASKET SUPPORT, Ø 22	3
	F73218556	GASKET SUPPORT, Ø 24	3
25	F90386600	O-RING, Ø 29.82X2.62, SM14-16-18	3
	F90387800	O-RING, Ø 39.34X2.62, SM20-22-24	3
26	F99382800	SCREW, M10X140, UNI 5931	24
27	F90381800	O-RING, Ø 7.59X2.62	1
28	F96738000	WASHER, Ø 17.5X23X1.5	1
29	F78214566	CHOKE FITTING, Ø 3-3/8"-3/8" M-M	1
30	F96416400	ROTATING FITTING, 90 DEGREE	1
31	F96735500	WASHER, Ø 16X65X1	3
32	F73150022	INSPECTION COVER, CLOSED	1

Item	Part #	Description	QTY.
33	F73050156	PLUNGER GUIDE ROD	3
34	F90414800	O-RING, Ø202.8X3.53	2
35	F73150122	OPEN INSPECTION COVER	1
36	F90168500	RING, RADIAL, Ø40X72X7/8.5	3
37	F97674000	ELASTIC PIN, Ø5X16, UNI 6876	3
38	F99369700	SCREW, M10X35, UNI 5739	3
39	F73050043	PLUNGER GUIDE	3
	F73050243	PLUNGER GUIDE, +0.10	3
40	F73210674	LIFTING BRACKET	1
41	F99513000	SCREW, M16X30, UNI 5931	2-4
42	F73030101	CONNECTING ROD, COMPLETE	3
43	F99378800	CONNECTING ROD SCREW	6
45	F90928300	CONNECTING ROD SEMI-BUSHING, LOWER	3
	F90928400	CONNECTING ROD SEMI-BUSHING, +0.25, LOWER	3
	F90928500	CONNECTING ROD SEMI-BUSHING, +0.50, LOWER	3
46	F90928000	CONNECTING ROD SEMI-BUSHING, UPPER	3
	F90928100	CONNECTING ROD SEMI-BUSHING, +0.25, UPPER	3
	F90928200	CONNECTING ROD SEMI-BUSHING, +0.50, UPPER	3
47	F90915800	CONNECTING ROD FOOT BUSHING	3
48	F90069000	RING, SEEGER, Ø 32, UNI 7437	6
49	F97744000	SPINDLE, Ø 32X55	3
50	F99183700	SCREW, M6X14, UNI 5931	4
51	F73200064	PUMP FOOT	2
52	F98206000	HOLE PLUG, Ø 15	6
53	F98233100	OIL PLUG, G1" WITH ROD	1
54	F90361600	O-RING, Ø 34.65X1.78	1
55	F73210295	OIL FILLING PLUG TUBE	1
56	F91854000	ROLLER BEARING	1
57	F10076735	PINION, HELICAL, Z24 R.1.875	1
	F10076835	PINION, HELICAL, Z21 R.2.238	1
	F10076935	PINION, HELICAL, Z18 R.2.722	1
58	F97623000	CYLINDER PIN, Ø 10X24, UNI 6364	2
59	F90101000	RING, SEEGER, Ø 120, UNI 6364	1
60	F91859900	ROLLER BEARING, Ø 55X120X29	1
61	F73210455	BEARING SUPPORT RING	1
62	F90081000	RING, SEEGER, Ø55, UNI 7435	1
63	F90172400	RING, RADIAL, Ø 55X75X8	1
64	F91500500	TAB, 14X9X60, UNI 6604	1
65	F73210589	SUPPORT RING	1
66	F99366700	SCREW, M10X25, UNI 5739	2
67	F91511000	TAB, 22X14X80, UNI 6604	1
68	F74213255	RING GEAR STOP	1
69	F73020035	CRANKSHAFT	1
70	F10077035	RING GEAR, HELICAL, Z45 R.1.875	1
	F10077135	RING GEAR, HELICAL, Z47 R.2.238	1
	F10077235	RING GEAR, HELICAL, Z49 R.2.722	1
71	F99371000	SCREW, M10X40, UNI 5931	15
72	F73210113	REDUCTION GEAR COVER	1
73	F90415000	O-RING, Ø253.6X3.53	2
74	F73210013	REDUCTION GEARBOX	1
75	F91881000	ROLLER BEARING, Ø80X140X33	2
76	F73210384	GASKET, LATERAL,	2
77	F73010013	PUMP CASING	1
78	F73160022	REAR COVER	1
79	F99368600	SCREW, M10X30, UNI 5931	14
80	F73150222	BEARING COVER	1
81	F98218300	PLUG, G1/2"X13, NICKEL	2
82	F36751400	WASHER, Ø21.5X27X1.5	3
<b>WITH HYDRAULIC MOTOR</b>			
83	F10079455	PINION, HELICAL, Z18 R.2.722	1
	F10077355	PINION, HELICAL, Z24 R.1.875	1
	F10077455	PINION, HELICAL, Z21 R.2.238	1
84	F73215513	HYDRAULIC PACK REDUCTION GEAR COVER	1
<b>DIRECT DRIVE</b>			
79	F99368600	SCREW, M10X30, UNI 5931	8
85	F73150322	BEARING COVER, OPEN	1
86	F90391450	O-RING, Ø75.87X2.62	1
87	F73215654	HYDRAULIC OPERATION RING	1
88	F90195000	RING, RADIAL, Ø90X110X12	1
<b>WITH AUXILIARY PTO</b>			
79	F99368600	SCREW, M10X30, UNI 5931	8
85	F73150322	BEARING COVER, OPEN	1
86	F90391450	O-RING, Ø75.87X2.62	1
88	F90195000	RING, RADIAL, Ø90X110X12	1
89	F73215754	AUXILIARY PTO DEVICE	1
90	F99367200	SCREW, M10X25, UNI 5931	6