

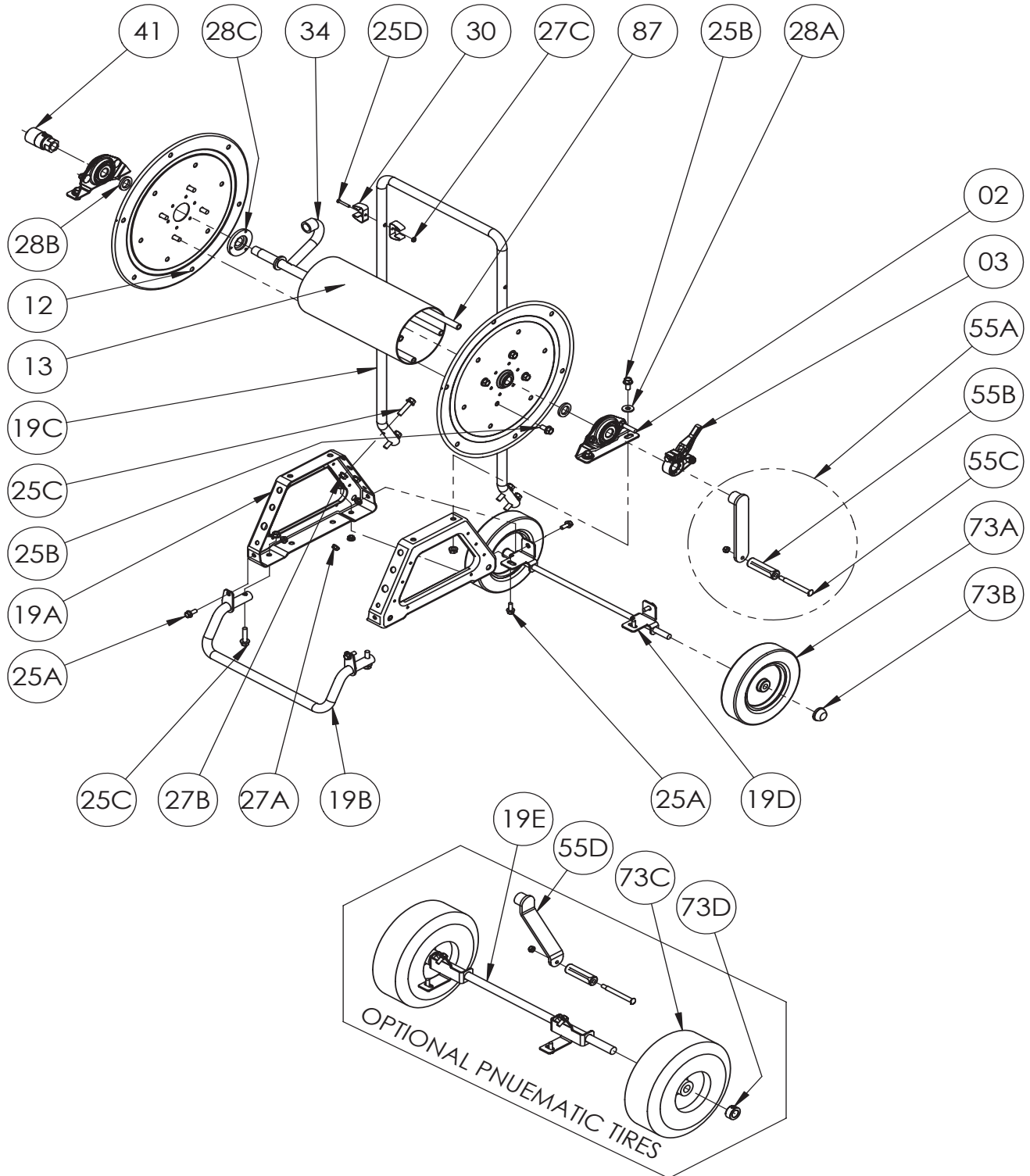


# Hannay Reels®

*The reel leader.*

Hannay Reels, Inc., 553 State Route 143  
Westerlo, NY 12193  
Telephone 518-797-3791 • Toll Free 1-877-GO-REELS (467-3357)  
FAX 1-800-REELING (733-5464)  
INT'L FAX (518) 797-3259  
Website: www.hannay.com  
E-mail: reels@hannay.com

## ISO 48 PARTS LIST MODEL 1100 & GH 1100 Portable Hose Reels



**PARTS LIST**  
**ISO 48**  
**Model 1100 & GH 1100 Portable Hose Reels**

When ordering parts  
**BE SURE TO SPECIFY COMPLETE MODEL NUMBER and SERIAL NUMBER OF REEL.**  
**USE PART NUMBER!**

| <u>Drawing No.</u> | <u>Description</u>                                                             | <b><u>PART NUMBER</u></b> | <u>Quantity</u> |
|--------------------|--------------------------------------------------------------------------------|---------------------------|-----------------|
| 02                 | Self Aligning Bearing Complete (See ISO-210 for Parts).....                    | 9902.1200                 | 2               |
| 03                 | Cam-Lock Brake (See ISO-254 for Parts).....                                    | 9947.0130                 | 1               |
| 12                 | 17-18 Disc.....                                                                | 9903.0516                 | 2               |
| 13                 | Drum - 6" Dia. - Aluminum.....                                                 | 9905.7112                 | 1               |
| 19A                | Frame.....                                                                     | 9906.0011                 | 2               |
| 19B                | Front Foot Assembly (Welded).....                                              | 9906.0733                 | 2               |
| 19C                | Removable Push Handle.....                                                     | 9906.0731                 | 1               |
| 19D                | Axle Assembly (Welded) (For Rubber Tires).....                                 | 9906.0732                 | 1               |
| 19E                | Axle Assembly (Welded) (For Pnuematic Tires).....                              | 9906.0734                 | 1               |
| 25A                | 5/16" - 18 x 3/4" Spinlock Bolt.....                                           | 9904.2101                 | 6               |
| 25B                | 3/8" - 16 x 3/4" Spinlock Bolt.....                                            | 9904.2201                 | 12              |
| 25C                | 3/8" - 16 x 1-1/2" Spinlock bolt.....                                          | 9904.2204                 | 6               |
| 25D                | #10 - 32 x 1-1/4" Slotted round Head Machine Screw.....                        | 9904.8205                 | 1               |
| 27A                | 5/16" - 18 Spinlock Nut.....                                                   | 9904.5602                 | 6               |
| 27B                | 3/8" - 16 Spinlock Nut.....                                                    | 9904.6200                 | 10              |
| 27C                | #10 - 32 Nut.....                                                              | 9904.4900                 | 1               |
| 28A                | 3/8" Flat Washer.....                                                          | 9954.0007                 | 4               |
| 28B                | 1-3/8" O.D. x 7/8" I.D. x 3/16" Hub Spacer Washer.....                         | 9954.0020                 | 4               |
| 28C                | Disc Washer.....                                                               | 9965.0040                 | 2               |
| 30                 | Retaining Clip (3/4").....                                                     | 9965.0055                 | 2               |
| 31                 | 5' Lead-In Garden Hose (GH 1100 Series Only) (Not Shown).....                  | 9965.0060                 | 1               |
| 34                 | 1/2" Hub Assembly - 1/2" FIPT Riser Outlet (1100 Series Only).....             | 9901.0610                 | 1               |
| 34                 | 1/2" Hub Assembly - 1/2" GHT Riser Outlet (304 SST) (GH 1100 Series Only)..... | 9901.0604                 | 1               |
| 41                 | 1/2" 90 Deg Brass FxF Super Swivel Joint (W/ Chrome Finish).....               | 9927.8591                 | 1               |
| 55A                | Hand Crank.....                                                                | 9914.0021                 | 1               |
| 55B                | Hand Crank Handle.....                                                         | 9914.0505                 | 1               |
| 55C                | Crank Handle Bolt w/ Nut.....                                                  | 9914.0511                 | 1               |
| 55D                | Hand Crank, Complete with Handle, Bolt & Nut.....                              | 9914.0071                 | 1               |
| 73A                | Wheel (1-3/4" x 8" Dia.).....                                                  | 9965.0065                 | 2               |
| 73B                | Plastic Wheel Hub Cap.....                                                     | 9965.0075                 | 2               |
| 73C                | Wheel/Tire.....                                                                | 9965.0066                 | 2               |
| 73D                | Shaft Collar (3/4" ID, 1.25" OD, 0.56" LGTH).....                              | 9955.0252                 | 1               |
| 87                 | Anodized Aluminum Threaded Spacer Tube.....                                    | Spec Model                | 4               |